

# 21st Annual Northwest Versatility Weekend

Hosted by:



**May 28-30, 2022  
Tacoma Polo Club  
Roy, WA**

**Saturday, May 28, 2022**

**WRA/LGRA/AOK9:** 200 yard sprint racing – All Eligible Breeds

**Sunday, May 29, 2022**

**NOTRA/AOK9:** 300 yard oval racing – All Eligible Breeds

**Monday, May 30, 2022**

**ASFA/LCI:** Lure Coursing – All Eligible Breeds

## **Versatility Competition**

Special prizes will be awarded at the conclusion of the ASFA trial for the highest ranked hound in each sighthound breed and each AOK9 breed or mix entered in all three areas of competition:

Sprint Racing (WRA *or* LGRA *or* AOK9)

*and*

Oval Racing (NOTRA *or* AOK9)

*and*

Lure Coursing (ASFA) - Regular stakes for sighthound breeds,  
LCI stakes for non-sighthound breeds or mixes

Any hound may be entered in any one event or combination of events, but only hounds that complete all three events, without being scratched, dismissed or disqualified, will be eligible for versatility awards.

# Northwest Versatility Weekend

## Tacoma Polo Club, Roy, WA

### FACILITIES INFORMATION



GPS may lead you to a private driveway on the cross street 288th. The property owners have requested that we DO NOT USE this private driveway to access the property. Please only use the main entrance on 8th Ave S.



### COVID GUIDELINES

For the safety of all participants and volunteers at this event, we will follow any restrictions in effect by local authorities at the time of the trial. We recommend social distancing and wearing a mask in situations where social distancing is not possible.

By entering this event, participants confirm that they will not attend the event if they are experiencing COVID symptoms or have been exposed to any known carrier of COVID within the past 14 days, and agree to abide by any local restrictions in effect.

Participants acknowledge the contagious nature of COVID-19 and voluntarily assume the risk that they may be exposed to or infected by COVID-19 by attending the club's event, and that such exposure or infection may result in personal injury, illness, permanent disability, and possibly death.

### Directions

**Address:** [29125 8th Ave S, Roy, WA](#)

**From the North:** From I-5 take exit #127 (Hwy 512 Puyallup exit) towards Puyallup. Take the Pacific Ave exit (Hwy 7) and turn right. Go south on Pacific Ave approximately 5 miles to the Roy "Y" and bear right on WA-507/Spanaway McKenna Hwy. Go 1.2 miles and turn slight left onto 8th Ave. Go 5.2 miles and turn left into the first driveway after the flashing yellow light at the 288th St. intersection. Follow dirt road to the club house and find a place to park.

**From the South:** Take I-5 exit 88A (Tenino exit), turn right onto Old Hwy 99 SE. Go approximately 8 miles and turn right on Hwy 507. Follow Hwy 507 approximately 14 miles to Yelm. Turn right onto Hwy 507 N/E Yelm Ave and follow for approximately 3 miles. Turn right on Hwy 702/352nd St. Go 5.3 miles to flashing yellow light and turn left on 8th Ave. Go approx. 3.5 miles. The Polo Field is down a dirt road in the trees on the right just before the 288th Street intersection, and will be marked with signage. Follow dirt road to the club house and find a place to park.

# Northwest Versatility Weekend



## Entries and Fees

### Race Meets and Versatility – WWA

Enter online at <https://forms.gle/dinzDHoxhWgd9bLr9>

### ASFA Lure Coursing

Enter online at <https://forms.gle/TEJSnt4xUyLcF3jH6>

### Entry Fees

Electronic payment via Zelle or PayPal (sending to a friend) to:

[paypal@wwwhippet.org](mailto:paypal@wwwhippet.org)

If you are unable to submit electronic payment, we will accept checks on the day of the meet. No cash, please and thanks, unless you absolutely have no other option.

### Questions?

Contact Beth Levine at [serendipitywhippets@gmail.com](mailto:serendipitywhippets@gmail.com).



## Accommodations

Camping (no hookups) is allowed on the field at no charge.

The following local hotels allow pets. Please contact each establishment directly for pet fees and policies. Check google for other pet-friendly local accommodations.

**Prairie Hotel** (~13 miles from field)

360-458-8300, 701 Prairie Park Ln., Yelm

<https://www.prairiehotel.com>

**La Quinta Inn & Suites by Wyndham Tacoma-Seattle** (~17 miles from field)

253-383-0146, 1425 East 27th St, Tacoma

[https://www.wyndhamhotels.com/laquinta/tacoma-washington/la-quinta-tacoma-seattle/overview?brand\\_id=LQ](https://www.wyndhamhotels.com/laquinta/tacoma-washington/la-quinta-tacoma-seattle/overview?brand_id=LQ)

**La Quinta Inn® by Wyndham Olympia-Lacey** (~30 miles from field) 360-412-1200, 4704

Park Center Avenue NE, Lacey

[https://www.wyndhamhotels.com/laquinta/lacey-washington/la-quinta-inn-olympia-lacey/overview?brand\\_id=LQ](https://www.wyndhamhotels.com/laquinta/lacey-washington/la-quinta-inn-olympia-lacey/overview?brand_id=LQ)



## Veterinarian

Many ER services are limited for the foreseeable future. Please call ahead to ensure availability.

**Spanaway Veterinary Clinic** (~8 miles from field) <https://www.spanawayvet.com/> 253-537

-4356. 16920 Pacific Ave S, Spanaway, WA.

Hours: Weekdays 7-6, Saturday 8-6, Sunday 9-5.

Directions from the field: Turn right on 8th Ave. Go 5 miles and turn right on WA-507. Go approximately 1 mile and turn left on WA-7. Go 1.3 miles to clinic.

**BluePearl Tacoma** (~18 miles from the field)

<https://bluepearlvet.com/hospital/tacoma-wa/>

253-474-0791. 2510 84th St. S, Ste. 30D, Lakewood, WA 98499.

Hours: 24 hour emergency care.

Directions from the field: Turn right on 8th Ave. Go 5 miles and turn right on WA-507. Go approximately 1 mile and turn left on WA-7. Go 4.67 miles and turn left on 116th St S. Turn right at the next intersection onto C St S and follow for 0.4 miles and continue onto Park Ave S. Go 0.8 miles and keep left to continue on Yakima Ave S for another 0.9 miles. Turn left onto S 84th St and continue for 1.3 miles. Look for clinic on the left.



## Food

In order to stay safe and adhere to COVID requirements, we will not offer our usual potluck lunches. Please bring your own food and drink to all of the events. Fast food is available approximately 20 minutes from the field.



## Practice

Practice: We will offer practice between programs and after the meet on Saturday and Sunday – time, weather and VOLUNTEERS permitting – for \$5/dog. Sign-up sheets will be available at the secretary's table. Sorry, no practice on Monday.

# Northwest Versatility Weekend

## WWWA AOK9/LGRA/NOTRA Race Meets

### Western Washington Whippet Association

Please note we are using an [online entry form](#) for all entries! Please don't email your entries directly to the race secretaries – having all the entries submitted via the form saves your race secretaries valuable time. If you are having trouble with the form or absolutely cannot use it to submit your entries, please email [wickedridgewhippets@gmail.com](mailto:wickedridgewhippets@gmail.com) and we'll work it out.

### Saturday, May 28, 2022 – WRA/LGRA/AOK9

Whippets: 200 yards, 4 programs, 6 dog races, races will be filled 1st program

Whippet Puppies: 150 yards, 3 programs, 4 dog races

Other Breeds: 200 yards, 3 programs, 4 dog races

Sprinters: 200 yards, 3 programs (more info below)

AOK9: 200 yards, 3 programs, 4 dog races

### Sunday, May 29, 2022 – ALL-BREED NOTRA/AOK9 Oval

Whippets: 300 yards, 4 programs, 4 dog races

Other Breeds: 300 yards, 3 programs, 4 dog races

AOK9: 300 yards, 3 program, 4 dog races

**ALL WRA/LGRA entries will be boxed (except Irish Wolfhounds). AOK9 will have the option to box or handslip depending on experience.**

**Location:** [Tacoma Polo Club, 29125 8th Ave S, Roy, WA](#). Please be aware that the GPS directions may take you to the wrong entrance. There are two entrances to the property. The property owners request you DO NOT use the entrance on 288th. PLEASE enter only from 8th Ave S. See directions below.

**Inspection:** 9:00 a.m. each day

### Eligible entry

**WRA:** Whippets; puppies 8-14 months may be entered in puppy races.

**LGRA:** Open to any Afghan Hound, Azawakh, Basenji, Borzoi, Chart Polski, Cirneco dell'Etna, Greyhound, Ibizan Hound, Irish Wolfhound, Italian Greyhound, Magyar Agar, Pharaoh Hound, Podengo, Rhodesian Ridgeback, Saluki, Scottish Deerhound, Silken Windhound, and Sloughi one year or older on the day of the meet.

**NOTRA:** Open to any Afghan Hound, Basenji, Borzoi, Cirneco dell'Etna, Greyhound, Ibizan Hound, Irish Wolfhound, Italian Greyhound, Pharaoh Hound, Rhodesian Ridgeback, Saluki, Scottish Deerhound, Silken Windhound, Sloughi, Whippet or provisional breed (Portuguese Podengo and Magyar Agar) one year or older on the day of the meet.

**Sprinter Racing** We are offering Sprinter Racing SATURDAY ONLY for WRA ineligible whippets. DQs OK – no measuring, no registration requirement.

**AOK9:** Open to any breed or mix breed 12 months or older on day of meet. Entries will not be accepted from breeds that are eligible to run in WRA/LGRA meets (unless said hound is WRA/LGRA ineligible). Please pre-register with the AOK9 registrar. <https://aok9racing.weebly.com/register.html>

**Division II racing** will be offered! If any whippet owner's would like to run Division II please sign up at: <http://www.indianawhippetclub.com/divisionII.html>. Eligibility for DII requires no more than 25% (3) racing champions (WRA, NOTRA, or NAWRA) in 3 generations. WWA & WRA will facilitate tracking your whippet's points. More information about DII can be found at the above website.

### **General Rules**

All racers must wear muzzles. All racers will be boxed unless the race committee deems the boxes will not accommodate a breed in attendance. Entries will only be accepted from hounds qualified to race. Hounds must be registered with the appropriate race organization to participate. To register in advance see the appropriate website (WRA: <https://www.whippetracing.org>; LGRA: <http://www.lgra.org>; NOTRA: <http://www.notra.org>); AOK9 <https://aok9racing.weebly.com/> for more information. Registration will be offered the day of the meet; for each organization, please bring a copy of hound's registration and the \$2 registration fee. However, pre-registration is greatly appreciated by the race secretary!

**Pre-Entry Fees** per day: \$18 first dog, \$15 each additional dog same day; \$55 kennel fee (four dogs or more same day). Puppy races: \$10. Sprinters: \$10.

**Day-of-Meet Fees** per day: \$20.00 per dog, no kennel discount.

Checks payable to: WWA or Paypal to [paypal@wwwhippet.org](mailto:paypal@wwwhippet.org) (use friends and family)

**Pre-entries close:** Wednesday, May 25, 2022, 6:00 p.m.

**Day-of-Meet entries close:** 9:00 a.m. the day of the meet

To submit your entries, go to: <https://forms.gle/dinzDHoxhWgd9bLr9>

**WRA/NOTRA whippet/AOK9 Race Secretary:** Jenna Eberl, [wickedridgewhippets@gmail.com](mailto:wickedridgewhippets@gmail.com) mobile: 253-820-7707

**LGRA/NOTRA OB Race Secretary:** Kerie Swepston, [kerie@swepston.us](mailto:kerie@swepston.us), mobile:

**COVID-19 SAFETY PROTOCOLS:** We will be following the current CDC/State guidelines regarding COVID-19 safety. If you have any COVID-19 symptoms or think you've been potentially exposed **PLEASE** stay home! We will be happy to refund any entry fees due to cancellations related to COVID-19.

### **Accommodations**

**Camping** (sorry no hookups) is allowed on the field at no charge.

**Prairie Hotel** (~13 miles from field)

360-458-8300, 701 Prairie Park Ln., Yelm, WA

<https://prairiehotel.com>

**La Quinta Inn & Suites Tacoma** (~17 miles from field)

253-383-0146, 1425 East 27th St, Tacoma, WA

## **Veterinarian**

### **Spanaway Veterinary Clinic** (~8 miles from field)

253-537-4356. 16920 Pacific Ave S, Spanaway, WA

<https://www.spanawayvet.com/>

Directions from the field: Turn right on 8th Ave. Go 5 miles and turn right on WA-507. Go approximately 1 mile and turn left on WA-7. Go 1.3 miles to clinic. Hours: Saturday 8-6, Sunday 10-6.

### **BluePearl Tacoma** (~15 miles from the field)

253-474-0791. 2510 84th St Ct S Ste. 30D, Lakewood, WA 98499

<https://bluepearlvet.com/tacoma-wa/>

**Directions from the field:** Turn right on 8th Ave. Go 5 miles and turn right on WA-507. Go approximately 1 mile and turn left on WA-7. Go 5.2 miles and take WA-512 onramp westbound towards Tacoma. Merge onto WA-512 W via the ramp to I-5/Seattle/Portland go 2.1 miles and take the exit onto I-5 N toward Tacoma/Seattle. Go 1.3 miles take exit 128 toward So 84 St Turn left onto S Hosmer St. Go 0.1 mile turn left onto S 84th St. Cross over I-5 clinic is in the Lakewood Cinema Plaza

Hours: 24 hour emergency care.

**Food:** Due to COVID restrictions we will not be holding our usual potluck. Please plan accordingly as the closest food sources are ~20 minutes each way from the field.

**Practice:** We may offer LIMITED practice between programs on Saturday and Sunday – time, weather and VOLUNTEERS permitting – for \$5/dog. Practice will be prioritized for dogs actively preparing for competition and owned by club members and volunteer workers. Sign-up sheets will be available at the secretary's table.

## **Directions**

**From the North:** From I-5 take exit #127 (Hwy 512 Puyallup exit) towards Puyallup. Take the Pacific Ave exit (Hwy 7) and turn right. Go south on Pacific Ave approximately 5 miles to the Roy "Y" and bear right on WA-507/Spanaway McKenna Hwy. Go 1.2 miles and turn left onto 8th Ave. Go 5.2 miles and (just after crossing 288th) turn left into the entrance to the Polo Field on a dirt road with livestock grate. Follow dirt road to the clubhouse.

**From the South:** Take I-5 exit 88 (Tenino exit) and turn right onto Old Hwy 99 SW/Tenino Grand Mound Rd SW. Go 7.7 miles and turn left onto Old Hwy 99 SE/S Wichman St. Continue onto WA-507 N/Sussex Ave E for 13.5 miles. Turn right onto WA-507 N/E Yelm Ave and follow for 2.9 miles. Turn right onto WA-702 E and follow for 5.3 miles to flashing yellow light and turn left on 8th Ave. Go approx. 3.5 miles. The Polo Field is down a dirt road with livestock grate in the trees on the right just before the 288th Street intersection. Follow dirt road to the clubhouse.

# Northwest Versatility Weekend

## Versatility Scoring

Special prizes will be awarded at the conclusion of the ASFA trial for the highest ranked hound in each sighthound breed or AOK9 breed or mix entered in all three areas of competition:

Sprint Racing (AOK9 *or* LGRA)

*and*

Oval Racing (AOK9 *or* NOTRA)

*and*

Lure Coursing (ASFA)

Any hound may be entered in any event or combination of events, but only hounds that compete in all three areas of competition will be eligible for Versatility awards. To be eligible, hounds must complete all three events, without dismissal or disqualification. Hounds scratched from any event, for any reason, are ineligible for Versatility awards.

**SPRINT:** Each hound competing in WRA, LGRA or AOK9 is ranked by its order of finish in the final results, relative to the other Versatility finalists in the same breed.

**OVAL:** Each hound competing in NOTRA or AOK9 is ranked by its order of finish in the final results, relative to the other Versatility finalists in the same breed.

**ASFA:** Sighthound breeds must be entered in open, field champion or veteran stakes to be eligible for Versatility awards (sighthounds entered in the singles stake are not eligible). AOK9 breeds entered in LCI stakes are eligible for Versatility awards. Hounds in each breed are ranked by total score (total of prelim + final), relative to the other Versatility finalists, regardless of stake. For example:

Open stake (score):

Rank 1 dog A 303

Rank 4 dog B 297

Rank 5 dog C 295

FCH stake:

Rank 2 dog D 299

Rank 3 dog E 298

Rank 7.5 dog F 290

Veteran Stake:

Rank 6 dog G 292

Rank 7.5 dog H 290

Rank 9 dog I 285

For the tied scores, the ranks are averaged, e.g. the 7 and 8 ranks above are averaged at 7.5.

**VERSATILITY:** Each finalist's ranks from the three events will be summed. The hound with the LOWEST score in each breed will win the Versatility award for that breed. For example, a perfect score, earned by the highest ranked dog in each event, would be a 3.





## PREMIUM LIST

Early entries close 6:00 p.m. Thursday, May 26, 2022 at the FTS' address  
(18919 77th Ave Ct E, Puyallup, WA 98375).

Day-of-trial entries close 9:00 a.m. at the FTS' table the day of the trial.



### ASFA REGION 1

## ONE ASFA ALL BREED LURE FIELD TRIAL AND LURE CHASING INSTINCT STAKE

Monday, May 30, 2022

Tacoma Polo Club

29125 8th Ave S, Roy, WA

### Entry Fees (US funds):

Early entry: \$25 first hound, \$20 each additional hound of same owner  
Day-of-Trial: \$30 each hound

***LCI will be limited to 10 hounds. Singles will be limited to 5 hounds  
NO EXCEPTIONS! Please don't ask. Enter early to secure your spot.  
No certification runs will be offered at this trial.***

*ASFA regulations prohibit the field secretary from accepting conditional entries,  
including phone, unpaid, or non-certified or non-waivered FTE (First Time Entered) entries.  
Completed entries, with fees, must be received by Early Entry deadline.*

No one will be allowed on the field without the express permission of the field chairman,  
except the appointed field committee. A \$5 fine will be charged to anybody caught not  
picking up after their dog or leaving garbage on the field. Anybody exhibiting unsportsmanlike  
behavior will be excused from the field and may be subject to further disciplinary action.

***These rules will be strictly enforced.***

Permission has been granted by the American Sighthound Field Association for the  
holding of this event under American Sighthound Field Association Rules and Regulations.  
Audrey Silverstein, Chair, ASFA Scheduling Committee

## Western Washington Whippet Association

**President** Janis Castle

**Vice President** Sara Flour

**Secretary** Karen Comer

**Treasurer** Beth Levine

**Board of Directors** Mary Downing, Reyna Hull-Walton, Jessica Harris

### Field Committee

**Field Chairman** Darcy Shurin, 425-829-6565 (cell), [dshurin@comcast.net](mailto:dshurin@comcast.net)

**Field Secretary** Sarah Smith-Falkner, 253-720-6130 (cell), [oscar31581@aol.com](mailto:oscar31581@aol.com)

**Lure Operator** Jeff Falkner, Aaron Swepton

### EARLY ENTRIES ACCEPTED ONLINE ONLY!

### NO PAPER ENTRY FORMS ACCEPTED FOR EARLY ENTRIES!

Fill out our Online Entry Form at

<https://form.jotform.com/220577420614047>

Follow instructions on the form and submit fees via Paypal or Zelle  
to [paypal@wwwwhippet.org](mailto:paypal@wwwwhippet.org). You will receive an email confirmation  
after submitting the form; if not, check your spam folder.

Pre-entries must be received by **6:00 p.m. Thursday,  
Thursday, May 26, 2022** to qualify for early entry fees.

### DAY-OF ENTRIES

In order to encourage early entries and reduce congestion at the  
FTS' table, day-of entries will be accepted but for a much higher  
entry fee (however, hounds completing their certification run at  
the event may enter the trial at pre-entry prices). Please be  
prepared to pay for day-of entries via Paypal, Zelle or paper check;  
cash is strongly discouraged. Paper entry forms will be available at  
the FTS' table, or you can fill out the entry form included in this  
premium, print, and bring to the trial.

All that said, save yourself some money — please pre-enter.

<https://form.jotform.com/220577420614047>

Contact [oscar31581@aol.com](mailto:oscar31581@aol.com) with any questions.

## Judges

Beth Levine Sultan, WA  
Paul Sanders Damascus, OR

Monday, May 30, 2022

Judge	A	Az	Ba	B	C	G	Ib	IW	IG	P	RR	S	SD	SI	SW	W	Sng	Prv	LCI
Levine	X	X	X	X	X	X	X	X	X	X	X	X	X	X	S	X	X	X	X
Sanders	*	*	*	*	*	*	*	*	*	*	*	*	*	*		*	*	*	*

\* = provisional judge, S = single judge

## Event Schedule

Trial Hours: 8:00 a.m.  
Day-of-Trial Entries Close: 9:00 a.m.  
Trial Roll Call: 9:00 a.m.

(Early inspection will be conducted after the start of trial hours and before the official roll call time – you are encouraged, but not required, to inspect your hounds early; hounds not present by the completion of roll call will be marked absent.)

## Eligible Breeds and Registry

Only purebred Afghan Hounds, Azawakhs, Basenjis, Borzoi, Cirneco dell'Etna, Greyhounds, Ibizan Hounds, Irish Wolfhounds, Italian Greyhounds, Pharaoh Hounds, Rhodesian Ridgebacks, Salukis, Scottish Deerhounds, Sloughis, Silken Windhounds and Whippets may be entered in the regular stakes.

Provisional breeds: Points and placements are awarded but no title certificates are issued until the breed is fully recognized by the ASFA. These hounds are NOT eligible for the Best in Field or Best in Event runs. Provisional breeds currently include purebred Chart Polski, Galgo Español, Magyar Agar, Peruvian Inca Orchid, Portuguese Podengo (Pequeno), Portuguese Podengo (Medio & Grande), and must be individually registered with the appropriate registry.

All entries shall be individually registered with the AKC (ILP/PAL included), the NGA, the UKC, the FCI, an ASFA-recognized foreign or ASFA Board approved registry, or possess a CRN from the SPDBS. A photocopy of acceptable registry must be submitted with each hound's first ASFA field trial entry; this requirement is waived for hounds registered with the NGA.

## Additional Information

A \$5.00 fine will be collected from the handler of any non-competing hound running loose on the field during the course in progress, and from any person not cleaning up after his/her hound. No alcoholic beverages will be permitted on the site during trial hours. Persons exhibiting unsportsmanlike conduct detrimental to WWWW, ASFA, Tacoma Polo Club, any hound, or other person will be asked to leave the trial site and may be subject to further disciplinary action.

## Regular Stakes

All hounds entering Open or Veteran stakes for the first time must include a completed certification form or waiver (all breeds) and a copy of the hound's registration certificate with their entry (waived for NGA Greyhounds only).

**OPEN STAKE:** Any eligible sighthound that has met the certification process, excluding ASFA Field Champions of record.

**FIELD CHAMPION STAKE:** Any ASFA Field Champion of record.

**VETERAN STAKE:** Any eligible hound that have met the certification process whose age is at least six years, except Irish Wolfhounds whose age shall be at least five years, and Afghan Hounds, Rhodesian Ridgebacks, Salukis, and Whippets whose age shall be at least seven years. Points go toward V-Fch or V-LCM titles.

**PROVISIONAL STAKE:** Any eligible sighthound of a Provisional breed that has met certification requirements. Not eligible to compete in Best of Breed or Best in Field.

**SINGLE STAKE:** Any eligible sighthound including those disqualified to run in other stakes. Each hound runs alone. Not eligible for Best of Breed or Best in Field. Hounds are eligible to earn TCP and CPX titles from the Singles stake. Provisional breeds are not eligible for these titles.

**BEST IN FIELD** will be offered.

## Lure Chasing Instinct Stake (LCI)

Open to non sighthounds and sighthound mixes. Each Hound runs alone. All entries shall be individually registered with the AKC (including ILP & PAL) or the UKC. A photocopy of all acceptable registry must be submitted with each dog's first ASFA field trial entry. Dogs without a recognized registry number may obtain an ASFA ID number for a \$10.00 registration fee at the time of entry.

**SMALL OPEN:** for 17-1/2 inches or less at the withers and / or brachycephalic ("flat-faced") dogs who have not achieved the title of LCC.

**SMALL SENIOR:** for dogs 17-1/2 inches or less at the withers and/or brachycephalic dogs who have achieved the title of LCC.

**SMALL VETERAN:** for dogs 17-1/2 inches or less at the withers and/or brachycephalic dogs over the age of 7 years.

**LARGE OPEN:** for dogs over 17-1/2 inches at the withers who have not achieved the title of LCC.

**LARGE SENIOR:** is for dogs over 17-1/2 inches at the withers who have achieved the title of LCC.

**LARGE VETERAN:** for dogs over 17-1/2 inches at the withers who are over the age of 7 years.

**SIGHTHOUND MIX OPEN:** for dogs with a sighthound breed in its background who have not achieved the title of LCC.

**SIGHTHOUND MIX SENIOR:** for dogs with sighthound breed in its background who have achieved the title of LCC.

**SIGHTHOUND MIX VETERAN:** for dogs with sighthound breed in its background over the age of 7 years.

## Awards

---

**Rosettes** will be offered for all placements: 1st (blue), 2nd (red), 3rd (yellow), 4th (white), NBQ (green), Highest Scoring Single (navy/gold), Best of Breed (purple/gold), and Best in Field (red/white/blue). Prizes awarded for 1st placements, BOB and BIF for all breeds. New title awards available for any new titles earned at our trials.

## Equipment

---

Battery-powered DRAG lure machines will be used, with backup equipment on site. The lure will consist of white plastic and/or fur strips.

## Conditions of Entry

---

All entries must be one year or older on the day of the trial. Stakes will be split into flights by public random draw if the entry in any regular stake is 20 or more. Bitches in season, lame hounds and hounds with breed disqualifications will be excused at roll call. Spayed, neutered, monorchid or cryptorchid hounds without breed disqualifications may be entered. Hounds with breed disqualifications are not eligible to enter except in the Single Stake. Hounds not present at the time of roll call will be scratched. All hounds will run twice, in trios if possible or braces (except in the Single Stake), unless excused, dismissed or disqualified.



## Potluck and Amenities

---

For COVID safety, there will be no potluck or shared food available. Please bring your own meals and drinks. A variety of restaurants are approximately 5 minutes from the field. Water and shade are not available on site. Please bring your own.

Go to [www.ASFA.org](http://www.ASFA.org) for the latest Rulebook, Policies, Contacts, Clubs, Trial Schedules, Trial Results & much more.



## Accommodations

---

**Camping** (no hookups) is allowed on the field at no charge.

The following local hotels allow pets. Please contact each establishment directly for pet fees and policies.

**Prairie Hotel** (~13 miles from field)  
360-458-8300, 701 Prairie Park Ln., Yelm, WA  
<https://www.prairiehotel.com>

**La Quinta Inn & Suites by Wyndham Tacoma-Seattle** (~17 miles from field)  
253-383-0146, 1425 East 27th St, Tacoma, WA  
[https://www.wyndhamhotels.com/laquinta/tacoma-washington/la-quinta-tacoma-seattle/overview?brand\\_id=LQ](https://www.wyndhamhotels.com/laquinta/tacoma-washington/la-quinta-tacoma-seattle/overview?brand_id=LQ)

**La Quinta Inn® by Wyndham Olympia-Lacey** (~30 miles from field)  
360-412-1200, 4704 Park Center Avenue NE, Lacey, WA  
[https://www.wyndhamhotels.com/laquinta/lacey-washington/la-quinta-inn-olympia-lacey/overview?brand\\_id=LQ](https://www.wyndhamhotels.com/laquinta/lacey-washington/la-quinta-inn-olympia-lacey/overview?brand_id=LQ)



## Veterinarian

---

**Many ER services are limited for the foreseeable future. Please call ahead to ensure availability.**

**Spanaway Veterinary Clinic** (~8 miles from field)  
<https://www.spanawayvet.com/>  
253-537-4356. 16920 Pacific Ave S, Spanaway, WA.

Hours: Weekdays 7-6, Saturday 8-6, Sunday 9-5.

Directions from the field: Turn right on 8th Ave. Go 5 miles and turn right on WA-507. Go approximately 1 mile and turn left on WA-7. Go 1.3 miles to clinic.

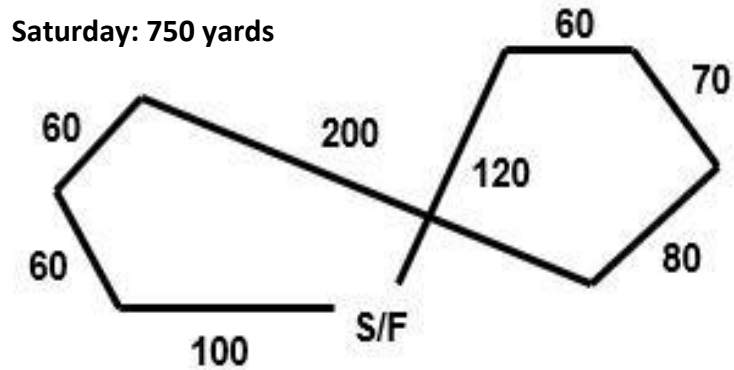
**BluePearl Tacoma** (~18 miles from the field)  
<https://bluepearlvet.com/hospital/tacoma-wa/>  
253-474-0791. 2510 84th St. S, Ste. 30D, Lakewood, WA 98499.

Hours: 24 hour emergency care.

Directions from the field: Turn right on 8th Ave. Go 5 miles and turn right on WA-507. Go approximately 1 mile and turn left on WA-7. Go 4.67 miles and turn left on 116th St S. Turn right at the next intersection onto C St S and follow for 0.4 miles and continue onto Park Ave S. Go 0.8 miles and keep left to continue on Yakima Ave S for another 0.9 miles. Turn left onto S 84th St and continue for 1.3 miles. Look for clinic on the left.

## Course Plan

The club reserves the right to alter the courses as required by weather and/or field conditions on the day of the trial. The courses will be reversed for finals and again for run-offs or at the discretion of the judges.



## COVID Protocols

For the safety of all participants and volunteers at this event, we will follow any restrictions in effect by local authorities at the time of the trial. We recommend social distancing and wearing a mask in situations where social distancing is not possible.

By entering this event, participants confirm that they will not attend the event if they are experiencing COVID symptoms or have been exposed to any known carrier of COVID within the past 14 days, and agree to abide by any local restrictions in effect.

Participants acknowledge the contagious nature of COVID-19 and voluntarily assume the risk that they may be exposed to or infected by COVID-19 by attending the club's event, and that such exposure or infection may result in personal injury, illness, permanent disability, and possibly death.

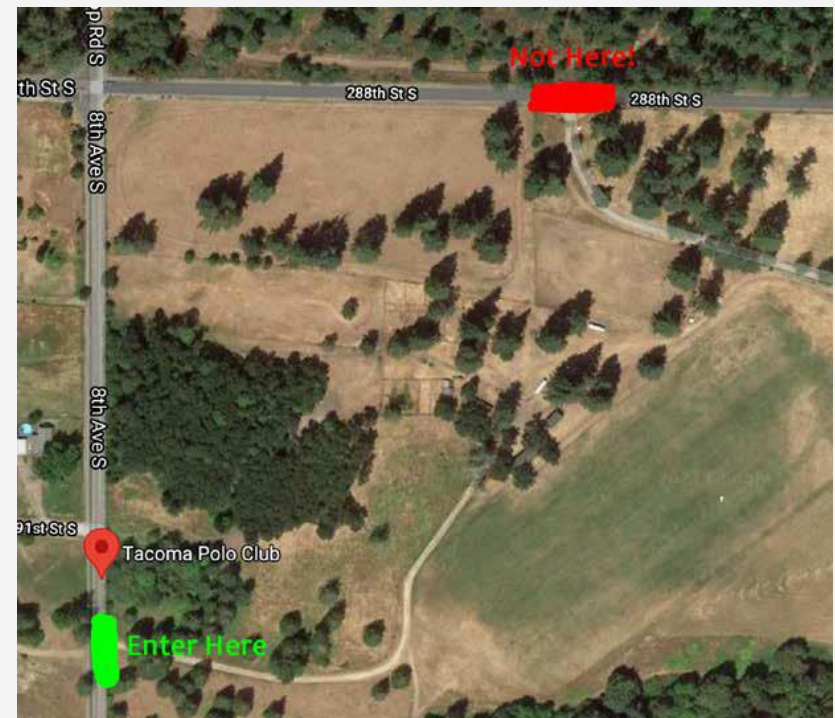
## Driving Directions

Site address: 29125 8th Ave S, Roy, WA

**From the North:** From I-5 take exit #127 (Hwy 512 Puyallup exit) towards Puyallup. Take the Pacific Ave exit (Hwy 7) and turn right. Go south on Pacific Ave approximately 5 miles to the Roy "Y" and bear right on WA-507/Spanaway McKenna Hwy. Go 1.2 miles and turn slight left onto 8th Ave. Go 5.2 miles and turn left into the first driveway after the flashing yellow light at the 288th St. intersection. Follow dirt road to the club house and find a place to park.

**From the South:** Take I-5 exit 88A (Tenino exit), turn right onto Old Hwy 99 SE. Go approximately 8 miles and turn right on Hwy 507. Follow Hwy 507 approximately 14 miles to Yelm. Turn right onto Hwy 507 N/E Yelm Ave and follow for approximately 3 miles. Turn right on Hwy 702/352nd St. Go 5.3 miles to flashing yellow light and turn left on 8th Ave. Go approx. 3.5 miles. The Polo Field is down a dirt road in the trees on the right just before the 288th Street intersection, and will be marked with signage. Follow dirt road to the club house and find a place to park.

GPS may lead you to a private driveway on the cross street 288th. The property owners have requested that we DO NOT USE this private driveway to access the property. Please only use the main entrance on 8th Ave S.



OFFICIAL AMERICAN SIGHTHOUND FIELD ASSOCIATION ENTRY FORM  
Western Washington Whippet Assn—All Breed ASFA Lure Field Trial

Monday, May 30, 2022

Early entries close 6pm, Thurs, May 26, 2022 Day-of-Trial Entries close 9 am the day of the trial  
Early entry \$25 1st hound, \$20 each additional hound same owner Day-of-trial entry \$30 each hound

Early entries accepted online only at <https://form.jotform.com/220577420614047>

Paper entries only accepted for day-of-trial entries.

Fee Paid \_\_\_\_\_ The Field Secretary cannot accept conditional, unsigned, incomplete or unpaid entries; please check your completed entry carefully.

Breed:	Call Name:
Registered Name of Hound:	
Stake: <input type="checkbox"/> Open <input type="checkbox"/> FCH <input type="checkbox"/> Veteran <input type="checkbox"/> Single <input type="checkbox"/> Provisional	Additional Stake <input type="checkbox"/> Kennel <input type="checkbox"/>
Registration Number: (please write in registering body before number)	
<input type="checkbox"/> If possible, please separate my hounds	Date of Birth: Sex: <input type="checkbox"/> Dog
Name of actual owner(s):	
Address:	Phone:
City:	State: Zip:
E-mail (Optional)	(Optional) Region of Residence: (Optional)

Emergency Contact Name:
<input type="checkbox"/> Check if this is entered in Open
<input type="checkbox"/> Check if this is accompany this
<input type="checkbox"/> Check if any info
<input type="checkbox"/> Check if this hound qualify for a "clear"

I CERTIFY that I am the owner of the dog whose name I have entered on this dog judged and to v the American Sighthound and regulations appear field trial has the right to hold this club, its members and the aforementioned parties from any injury which may be alleged while in or upon the field. I assume all responsibility for the safety of the parties harmless from any claim that may be caused by the negligence of any other cause or causes. This entry is submitted for the use of the club.

SIGNATURE of owner or duly authorized to make entries

Please print name

OFFICIAL AMERICAN SIGHTHOUND FIELD ASSOCIATION ENTRY FORM  
Western Washington Whippet Assn—All Breed ASFA Lure Field Trial

Monday, May 30, 2022

Early entries close 6pm, Thurs, May 26, 2022 Day-of-Trial Entries close 9 am the day of the trial  
Early entry \$25 1st hound, \$20 each additional hound same owner Day-of-trial entry \$30 each hound

Early entries accepted online only at <https://form.jotform.com/220577420614047>

Paper entries only accepted for day-of-trial entries.

Fee Paid \_\_\_\_\_ The Field Secretary cannot accept conditional, unsigned, incomplete or unpaid entries; please check your completed entry carefully.

Breed:	Call Name:
Registered Name of Hound:	
Stake: <input type="checkbox"/> Open <input type="checkbox"/> FCH <input type="checkbox"/> Veteran <input type="checkbox"/> Single <input type="checkbox"/> Provisional	Additional Stake <input type="checkbox"/> Kennel <input type="checkbox"/> Breeder <input type="checkbox"/> Bench
Registration Number: (please write in registering body before number)	
<input type="checkbox"/> If possible, please separate my hounds	Date of Birth: Sex: <input type="checkbox"/> Dog <input type="checkbox"/> Bitch
Name of actual owner(s):	
Address:	Phone:
City:	State: Zip:
E-mail (Optional)	(Optional) Region of Residence: (Optional)

Emergency Contact Name:
<input type="checkbox"/> Check if this is entered in Open
<input type="checkbox"/> Check if this is accompany this
<input type="checkbox"/> Check if any info
<input type="checkbox"/> Check if this hound qualify for a "clear"

I CERTIFY that I am the owner of the dog whose name I have entered on this dog judged and to v the American Sighthound and regulations appear field trial has the right to hold this club, its members and the aforementioned parties from any injury which may be alleged while in or upon the field. I assume all responsibility for the safety of the parties harmless from any claim that may be caused by the negligence of any other cause or causes. This entry is submitted for the use of the club.

SIGNATURE of owner or duly authorized to make entries

Please print name



Do not mail or email paper entry forms.  
Early entries are only accepted using our online entry form:  
<https://form.jotform.com/220577420614047>

See the first page of this premium for more information about how to enter.

The entry forms on the following pages are only included in case you plan to enter day-of (note day-of entries are \$30/dog) and would like to fill out your entry forms in advance. This is not a requirement—we will have forms to fill out at the secretary's desk.

of the actual owner whose opportunity to have this dog judged and to v the American Sighthound and regulations appear field trial has the right to hold this club, its members and the aforementioned parties from any injury which may be alleged while in or upon the field. I assume all responsibility for the safety of the parties harmless from any claim that may be caused by the negligence of any other cause or causes. I This entry is submitted for the use of the club.

Signature of owner or duly authorized to make entries

**OFFICIAL AMERICAN SIGHTHOUND FIELD ASSOCIATION ENTRY FORM**  
**Western Washington Whippet Assn—All Breed ASFA Lure Field Trial**

**Monday, May 30, 2022**

**Early entries** close 6pm, Thurs, May 26, 2022 **Day-of-Trial Entries** close 9 am the day of the trial  
**Early entry** \$25 1st hound, \$20 each additional hound same owner **Day-of-trial entry** \$30 each hound

**Early entries accepted online only at** <https://form.iotform.com/220577420614047>

**Paper entries only accepted for day-of-trial entries.**

Fee Paid \_\_\_\_\_ The Field Secretary cannot accept conditional, unsigned, incomplete or unpaid entries; please check your completed entry carefully.

Breed:		Call Name:	
Registered Name of Hound:			
Stake: <input type="checkbox"/> Open <input type="checkbox"/> FCH <input type="checkbox"/> Veteran <input type="checkbox"/> Single <input type="checkbox"/> Provisional		Additional Stakes <input type="checkbox"/> Kennel <input type="checkbox"/> Breeder <input type="checkbox"/> Bench	
Registration Number: (please write in registering body before number)			
<input type="checkbox"/> If possible, please separate my hounds	Date of Birth:	Sex: <input type="checkbox"/> Dog <input type="checkbox"/> Bitch	
Name of actual owner(s):			
Address:		Phone:	
City:	State:	Zip:	
E-mail (Optional)		(Optional) Region of Residence:	
Emergency Contact Name and Phone (Optional)			
<input type="checkbox"/> Check if this is the first ASFA trial for this hound. Attach a Hound Certification or waiver if entered in Open, Veterans, Limited. <input type="checkbox"/> Check if this is a first-time entry, a copy of the official Registration of this hound must accompany this entry unless NGA. <input type="checkbox"/> Check if any information has changed since the last ASFA trial entry. Regarding _____ <input type="checkbox"/> Check if this hound has been dismissed within the last 6 trials entered. Must be marked in order to qualify for a "clean" trial requirement.			

I CERTIFY that I am the actual owner of this dog, or that I am the duly authorized agent of the actual owner whose name I have entered above. In consideration of the acceptance of this entry and the opportunity to have this dog judged and to win prize money, ribbons, or trophies, I (we) agree to abide by the rules and regulations of the American Sighthound Field Association in effect at the time of this lure field trial, and by any additional rules and regulations appearing in the premium list for this lure field trial. I (we) agree that the club holding this lure field trial has the right to refuse this entry for cause, which the club shall deem to be sufficient. I (we) agree to hold this club, its members, directors, governors, officers, agents or other functionaries, any employees of the aforementioned parties and the owner(s) of the trial premises or grounds harmless from any claim for loss or injury which may be alleged to have been caused directly or indirectly to any person or thing by the act of this dog while in or upon the lure field trial premises or grounds or near any entrance thereto and I (we) personally assume all responsibility and liability for any such claim, and I (we) further agree to hold the aforementioned parties harmless from any claim loss of this dog by disappearance, theft damage or injury be caused or alleged to be caused by the negligence of the club or any of the aforementioned parties or by the negligence of any person or any other cause or causes. I (we) certify and represent that the dog entered is not a hazard to person or other dogs. This entry is submitted for acceptance of the forgoing representations and agreements.

**SIGNATURE** of owner or his agent  
 duly authorized to make this entry \_\_\_\_\_

**Please separate the entries before submitting to FTS.**

**OFFICIAL AMERICAN SIGHTHOUND FIELD ASSOCIATION ENTRY FORM**  
**Western Washington Whippet Assn—All Breed ASFA Lure Field Trial**

**Monday, May 30, 2022**

**Early entries** close 6pm, Thurs, May 26, 2022 **Day-of-Trial Entries** close 9 am the day of the trial  
**Early entry** \$25 1st hound, \$20 each additional hound same owner **Day-of-trial entry** \$30 each hound

**Early entries accepted online only at** <https://form.iotform.com/220577420614047>

**Paper entries only accepted for day-of-trial entries.**

Fee Paid \_\_\_\_\_ The Field Secretary cannot accept conditional, unsigned, incomplete or unpaid entries; please check your completed entry carefully.

Breed:		Call Name:	
Registered Name of Hound:			
Stake: <input type="checkbox"/> Open <input type="checkbox"/> FCH <input type="checkbox"/> Veteran <input type="checkbox"/> Single <input type="checkbox"/> Provisional		Additional Stakes <input type="checkbox"/> Kennel <input type="checkbox"/> Breeder <input type="checkbox"/> Bench	
Registration Number: (please write in registering body before number)			
<input type="checkbox"/> If possible, please separate my hounds	Date of Birth:	Sex: <input type="checkbox"/> Dog <input type="checkbox"/> Bitch	
Name of actual owner(s):			
Address:		Phone:	
City:	State:	Zip:	
E-mail (Optional)		(Optional) Region of Residence:	
Emergency Contact Name and Phone (Optional)			
<input type="checkbox"/> Check if this is the first ASFA trial for this hound. Attach a Hound Certification or waiver if entered in Open, Veterans, Limited. <input type="checkbox"/> Check if this is a first-time entry, a copy of the official Registration of this hound must accompany this entry unless NGA. <input type="checkbox"/> Check if any information has changed since the last ASFA trial entry. Regarding _____ <input type="checkbox"/> Check if this hound has been dismissed within the last 6 trials entered. Must be marked in order to qualify for a "clean" trial requirement.			

I CERTIFY that I am the actual owner of this dog, or that I am the duly authorized agent of the actual owner whose name I have entered above. In consideration of the acceptance of this entry and the opportunity to have this dog judged and to win prize money, ribbons, or trophies, I (we) agree to abide by the rules and regulations of the American Sighthound Field Association in effect at the time of this lure field trial, and by any additional rules and regulations appearing in the premium list for this lure field trial. I (we) agree that the club holding this lure field trial has the right to refuse this entry for cause, which the club shall deem to be sufficient. I (we) agree to hold this club, its members, directors, governors, officers, agents or other functionaries, any employees of the aforementioned parties and the owner(s) of the trial premises or grounds harmless from any claim for loss or injury which may be alleged to have been caused directly or indirectly to any person or thing by the act of this dog while in or upon the lure field trial premises or grounds or near any entrance thereto and I (we) personally assume all responsibility and liability for any such claim, and I (we) further agree to hold the aforementioned parties harmless from any claim loss of this dog by disappearance, theft damage or injury be caused or alleged to be caused by the negligence of the club or any of the aforementioned parties or by the negligence of any person or any other cause or causes. I (we) certify and represent that the dog entered is not a hazard to person or other dogs. This entry is submitted for acceptance of the forgoing representations and agreements.

**SIGNATURE** of owner or his agent  
 duly authorized to make this entry \_\_\_\_\_

**Please separate the entries before submitting to FTS.**

**AMERICAN SIGHTHOUND FIELD ASSOCIATION  
HOUND CERTIFICATION**

**Rule effective October 1, 1994: Ch. V, Sec. 4 (a) OPEN STAKE:** *To be eligible to enter the open stake, a hound must have been certified by a licensed judge within the year preceding the closing date for the entry or have previously competed in the Open Stake.* This eligibility requirement also applies to a hound entered in the Veteran Stake, which has not competed in Open previously. Please complete this portion of this form and attach it to the entry form for the hound's first entry, including an entry for a Fun Trial.

Registered Name of Hound: \_\_\_\_\_

Registration Number: \_\_\_\_\_ Breed: \_\_\_\_\_

Registered Owner's Name: \_\_\_\_\_

I hereby certify that on (date) \_\_\_\_\_, the above named hound completed a lure course of at least 500 yards, running with another hound of the same breed (or another breed with a similar running style). During the course the above named hound showed no inclination to interfere with the other hound. I further certify that I am a licensed judge for the ASFA.

Name of Licensed Judge: \_\_\_\_\_

Signature: \_\_\_\_\_ Date: \_\_\_\_\_

I hereby certify that the hound running in the certification course is the hound identified above and that information provided on this form is true and correct.

Signature: \_\_\_\_\_ Date: \_\_\_\_\_

**Owner or Authorized Agent of Hound**

This certification form must be attached to the entry form the first time this hound is entered in an open or veteran stake. Any hound entered in open, or veteran (as a first time entered hound), which has not been certified, shall be declared ineligible by the records coordinator and shall forfeit any points and placements awarded.

**PLEASE RETAIN A COPY FOR YOUR RECORDS.**

**AMERICAN SIGHTHOUND FIELD ASSOCIATION  
HOUND CERTIFICATION WAIVER**

**Waiver of Requirement:** *This requirement will be waived for a hound that has earned a lure coursing title from another recognized organization, if such title requires competition, and if a waiver for such title has been approved by the ASFA, or a CKC Hound Certification Form. If your hound qualifies for a waiver, complete this portion of this form and attach it to your entry form. Proof of waivers must accompany this certification form.*

Registered Name of Hound: \_\_\_\_\_

Registration Number: \_\_\_\_\_ Breed: \_\_\_\_\_

Registered Owner's Name: \_\_\_\_\_

**CKC:** FCH FCHX

**AKC:** QC SC FC

Hound Certification previously submitted.

I hereby certify that the hound identified above has completed the requirements for the title indicated above (or that the required Certification was previously submitted) and that the information provided on this form is true and correct.

Signature: \_\_\_\_\_ Date: \_\_\_\_\_

**Owner or Authorized Agent of Hound**

**AMERICAN SIGHTHOUND FIELD ASSOCIATION  
HOUND CERTIFICATION**

**Rule effective October 1, 1994: Ch. V, Sec. 4 (a) OPEN STAKE:** *To be eligible to enter the open stake, a hound must have been certified by a licensed judge within the year preceding the closing date for the entry or have previously competed in the Open Stake.* This eligibility requirement also applies to a hound entered in the Veteran Stake, which has not competed in Open previously. Please complete this portion of this form and attach it to the entry form for the hound's first entry, including an entry for a Fun Trial.

Registered Name of Hound: \_\_\_\_\_

Registration Number: \_\_\_\_\_ Breed: \_\_\_\_\_

Registered Owner's Name: \_\_\_\_\_

I hereby certify that on (date) \_\_\_\_\_, the above named hound completed a lure course of at least 500 yards, running with another hound of the same breed (or another breed with a similar running style). During the course the above named hound showed no inclination to interfere with the other hound. I further certify that I am a licensed judge for the ASFA.

Name of Licensed Judge: \_\_\_\_\_

Signature: \_\_\_\_\_ Date: \_\_\_\_\_

I hereby certify that the hound running in the certification course is the hound identified above and that information provided on this form is true and correct.

Signature: \_\_\_\_\_ Date: \_\_\_\_\_

**Owner or Authorized Agent of Hound**

This certification form must be attached to the entry form the first time this hound is entered in an open or veteran stake. Any hound entered in open or veteran (as a first time entered hound), which has not been certified, shall be declared ineligible by the records coordinator and shall forfeit any points and placements awarded.

**PLEASE RETAIN A COPY FOR YOUR RECORDS.**

**AMERICAN SIGHTHOUND FIELD ASSOCIATION  
HOUND CERTIFICATION WAIVER**

**Waiver of Requirement:** *This requirement will be waived for a hound that has earned a lure coursing title from another recognized organization, if such title requires competition, and if a waiver for such title has been approved by the ASFA, or a CKC Hound Certification Form. If your hound qualifies for a waiver, complete this portion of this form and attach it to your entry form. Proof of waivers must accompany this certification form.*

Registered Name of Hound: \_\_\_\_\_

Registration Number: \_\_\_\_\_ Breed: \_\_\_\_\_

Registered Owner's Name: \_\_\_\_\_

**CKC:** FCH FCHX

**AKC:** QC SC FC

Hound Certification previously submitted.

I hereby certify that the hound identified above has completed the requirements for the title indicated above (or that the required Certification was previously submitted) and that the information provided on this form is true and correct.

Signature: \_\_\_\_\_ Date: \_\_\_\_\_

**Owner or Authorized Agent of Hound**

**OFFICIAL AMERICAN SIGHTHOUND FIELD ASSOCIATION  
LCI ENTRY FORM**

**Western Washington Whippet Assn—All Breed ASFA Lure Field Trial  
Monday, May 30, 2022**

**Early entries** close 6pm, Thurs, May 26, 2022 **Day-of-Trial Entries** close 9 am the day of the trial  
**Early entry** \$25 1st hound, \$20 each additional hound same owner **Day-of-trial entry** \$30 each hound  
**Early entries accepted online only at <https://form.iotform.com/220577420614047>**  
**Paper entries only accepted for day-of-trial entries.**

Fee Paid \_\_\_\_\_ The Field Secretary cannot accept conditional, unsigned, incomplete or unpaid entries; please check your completed entry carefully.

Breed:		Call Name:	
Registered Name of dog:			
Stake: <input type="checkbox"/> LCI-Small <input type="checkbox"/> LCI-Large <input type="checkbox"/> LCI-Sighthound Mix <input type="checkbox"/> Open <input type="checkbox"/> Senior <input type="checkbox"/> Veteran			
Registration Number: (please write in registering body before number)			
Date of Birth:		Sex: <input type="checkbox"/> Dog <input type="checkbox"/> Bitch	
Name of actual owner(s):			
Address:		Phone:	
City:		State:	Zip:
E-mail		(Optional) Region of Residence:	
Emergency Contact Name and Phone (Optional)			
<input type="checkbox"/> Check if this is a first-time entry, a copy of the official Registration of this hound must accompany this entry. (i.e., AKC Registration form, PAL registration, Canine Partner, etc.)			
<input type="checkbox"/> Check if any information has changed since the last ASFA trial entry. Regarding _____			

I CERTIFY that I am the actual owner of this dog, or that I am the duly authorized agent of the actual owner whose name I have entered above. In consideration of the acceptance of this entry and the opportunity to have this dog judged and to win prize money, ribbons, or trophies, I (we) agree to abide by the rules and regulations of the American Sighthound Field Association in effect at the time of this lure field trial, and by any additional rules and regulations appearing in the premium list for this lure field trial. I (we) agree that the club holding this lure field trial has the right to refuse this entry for cause, which the club shall deem to be sufficient. I (we) agree to hold this club, its members, directors, governors, officers, agents or other functionaries, any employees of the aforementioned parties and the owner(s) of the trial premises or grounds harmless from any claim for loss or injury which may be alleged to have been caused directly or indirectly to any person or thing by the act of this dog while in or upon the lure field trial premises or grounds or near any entrance thereto and I (we) personally assume all responsibility and liability for any such claim, and I (we) further agree to hold the aforementioned parties harmless from any claim loss of this dog by disappearance, theft damage or injury be caused or alleged to be caused by the negligence of the club or any of the aforementioned parties or by the negligence of any person or any other cause or causes. I (we) certify and represent that the dog entered is not a hazard to person or other dogs. This entry is submitted for acceptance of the forgoing representations and agreements.

**SIGNATURE** of owner or his agent \_\_\_\_\_  
duly authorized to make this entry \_\_\_\_\_

**Please separate the entries before submitting to FTS.**

**OFFICIAL AMERICAN SIGHTHOUND FIELD ASSOCIATION  
LCI ENTRY FORM**

**Western Washington Whippet Assn—All Breed ASFA Lure Field Trial  
Monday, May 30, 2022**

**Early entries** close 6pm, Thurs, May 26, 2022 **Day-of-Trial Entries** close 9 am the day of the trial  
**Early entry** \$25 1st hound, \$20 each additional hound same owner **Day-of-trial entry** \$30 each hound  
**Early entries accepted online only at <https://form.iotform.com/220577420614047>**  
**Paper entries only accepted for day-of-trial entries.**

Fee Paid \_\_\_\_\_ The Field Secretary cannot accept conditional, unsigned, incomplete or unpaid entries; please check your completed entry carefully.

Breed:		Call Name:	
Registered Name of dog:			
Stake: <input type="checkbox"/> LCI-Small <input type="checkbox"/> LCI-Large <input type="checkbox"/> LCI-Sighthound Mix <input type="checkbox"/> Open <input type="checkbox"/> Senior <input type="checkbox"/> Veteran			
Registration Number: (please write in registering body before number)			
Date of Birth:		Sex: <input type="checkbox"/> Dog <input type="checkbox"/> Bitch	
Name of actual owner(s):			
Address:		Phone:	
City:		State:	Zip:
E-mail		(Optional) Region of Residence:	
Emergency Contact Name and Phone (Optional)			
<input type="checkbox"/> Check if this is a first-time entry, a copy of the official Registration of this hound must accompany this entry. (i.e., AKC Registration form, PAL registration, Canine Partner, etc.)			
<input type="checkbox"/> Check if any information has changed since the last ASFA trial entry. Regarding _____			

I CERTIFY that I am the actual owner of this dog, or that I am the duly authorized agent of the actual owner whose name I have entered above. In consideration of the acceptance of this entry and the opportunity to have this dog judged and to win prize money, ribbons, or trophies, I (we) agree to abide by the rules and regulations of the American Sighthound Field Association in effect at the time of this lure field trial, and by any additional rules and regulations appearing in the premium list for this lure field trial. I (we) agree that the club holding this lure field trial has the right to refuse this entry for cause, which the club shall deem to be sufficient. I (we) agree to hold this club, its members, directors, governors, officers, agents or other functionaries, any employees of the aforementioned parties and the owner(s) of the trial premises or grounds harmless from any claim for loss or injury which may be alleged to have been caused directly or indirectly to any person or thing by the act of this dog while in or upon the lure field trial premises or grounds or near any entrance thereto and I (we) personally assume all responsibility and liability for any such claim, and I (we) further agree to hold the aforementioned parties harmless from any claim loss of this dog by disappearance, theft damage or injury be caused or alleged to be caused by the negligence of the club or any of the aforementioned parties or by the negligence of any person or any other cause or causes. I (we) certify and represent that the dog entered is not a hazard to person or other dogs. This entry is submitted for acceptance of the forgoing representations and agreements.

**SIGNATURE** of owner or his agent \_\_\_\_\_  
duly authorized to make this entry \_\_\_\_\_

**Please separate the entries before submitting to FTS.**



**OFFICIAL AMERICAN SIGHTHOUND FIELD ASSOCIATION**  
**Request for ASFA Lure Chasing Instinct Registration Number**

Fee Paid \_\_\_\_\_ This form is for dogs without any registration number from another registering body.

Please print legibly.

Breed:	Call Name:		
Registered Name of Dog:			
FTS will circle Size after wicketing at Inspection: <b>Size Small:</b> up to 17½ inches (or brachycephalic) <b>Size Large:</b> over 17½ inches			
Registration Number: (To be assigned by ASFA records coordinator.)			
Date of Birth:	Sex: <input type="checkbox"/> Dog <input type="checkbox"/> Bitch		
Name of actual owner(s):			
Address:		Phone:	
City:	State:	Zip:	
E-mail	Region of Residence: (Optional)		
Emergency Contact Name and Phone			

**This top portion is to be submitted with the \$10 fee to the Field Trial Secretary. First time trial entry on separate form.**

\*\*\*\*\*

\_\_\_\_\_ was entered in the \_\_\_\_\_  
(Dog's Name) (ASFA Club Name)

ASFA trial held on \_\_\_\_\_ (Date). The dog was wicketed at inspection and is registered as Size \_\_\_\_\_. The fee of \$10 was received by the FTS and submitted to the ASFA Records Coordinator.

\_\_\_\_\_  
Printed name of Field Trial Secretary

\_\_\_\_\_  
Signature of Field Trial Secretary

(Owner is to retain this receipt as proof of registration until notified by the ASFA.)

**OFFICIAL AMERICAN SIGHTHOUND FIELD ASSOCIATION**  
**Request for ASFA Lure Chasing Instinct Registration Number**

Fee Paid \_\_\_\_\_ This form is for dogs without any registration number from another registering body.

Please print legibly.

Breed:	Call Name:		
Registered Name of Dog:			
FTS will circle Size after wicketing at Inspection: <b>Size Small:</b> up to 17½ inches (or brachycephalic) <b>Size Large:</b> over 17½ inches			
Registration Number: (To be assigned by ASFA records coordinator.)			
Date of Birth:	Sex: <input type="checkbox"/> Dog <input type="checkbox"/> Bitch		
Name of actual owner(s):			
Address:		Phone:	
City:	State:	Zip:	
E-mail	Region of Residence: (Optional)		
Emergency Contact Name and Phone			

**This top portion is to be submitted with the \$10 fee to the Field Trial Secretary. First time trial entry on separate form.**

\*\*\*\*\*

\_\_\_\_\_ was entered in the \_\_\_\_\_  
(Dog's Name) (ASFA Club Name)

ASFA trial held on \_\_\_\_\_ (Date). The dog was wicketed at inspection and is registered as Size \_\_\_\_\_. The fee of \$10 was received by the FTS and submitted to the ASFA Records Coordinator.

\_\_\_\_\_  
Printed name of Field Trial Secretary

\_\_\_\_\_  
Signature of Field Trial Secretary

(Owner is to retain this receipt as proof of registration until notified by the ASFA.)